
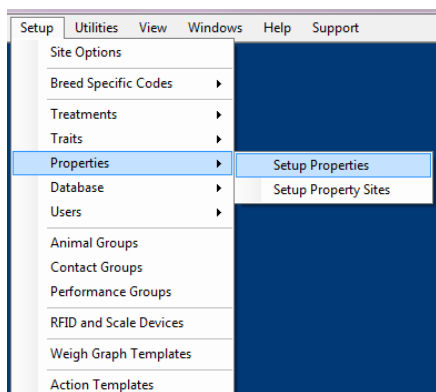


HerdMASTER 4 Tip Sheet

HOW TO SETUP YOUR AUTOFILL INFO FOR NLIS, CCIA, NAIT AND EMAIL FIELDS

When you send data through to your society or BREEDPLAN and use the world icon  to send it through our servers, you need to have your email address entered, however you can setup HerdMASTER to autofill this field. This is also used to autofill all your NLIS details when you download your tags or upload data to NLIS's database.

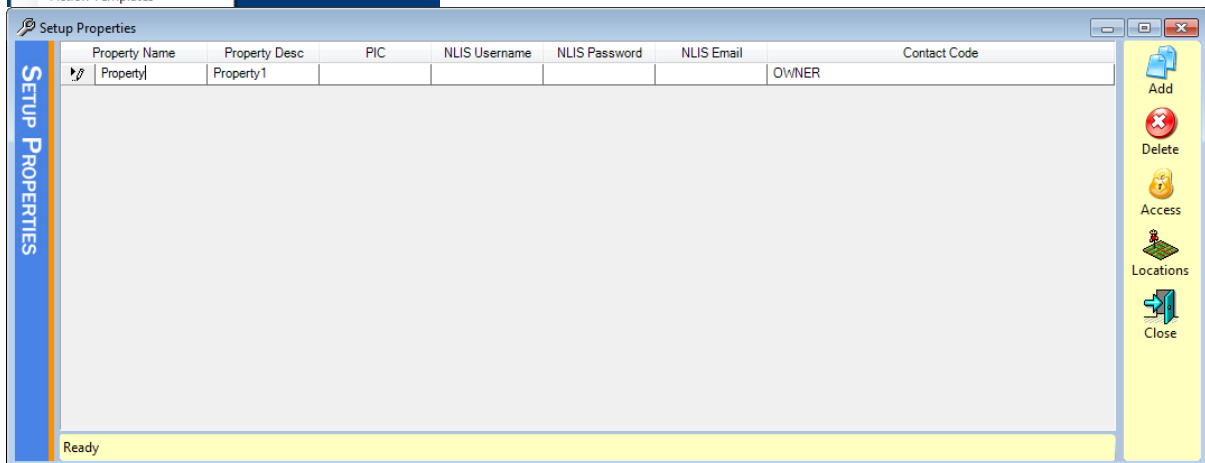
SETTING UP YOUR AUTOFILL INFO



In Setup | Properties | Setup Properties

See how the fields for the property have the option for a PIC your NLIS username and password as well as an email address. (These fields may appear slightly different for other countries)

By filling out these fields, all areas which require these passwords and addresses will autofill with the information you enter here.



For example, if you have filled out all these details including PIC, when you submit a movement to NLIS it will automatically know which PIC you are one and prefill all your login details.

When you submit a society rego by using the world icon



it will pre-fill your email address.