



HerdMASTER 4 Tip Sheet

WORKSHEETS AND FILTERS EXPLAINED

WHAT THEY ARE

Different ways of limiting the animals displayed in your animal list or on the animal selection screens (say in Data Entry).

Worksheets and filters can also be use together.

WORKSHEETS

Simply put, a worksheet is just a list of animals, you may put any animal onto a list and animals may be part of as many lists as you wish.

I find the best way of using a worksheet is the same way you would write down a list of particular animals you want to take out into the field and do something with. This way you always have that list of animals in case you ever need to go back to do more with them or correct an error.

FILTERS

A filter is a **conditional** list. This means that the animals listed must meet certain criteria, for example **SEX** must **EQUAL MALE**, or **BIRTH YEAR** must be **GREATER THAN 2005**.

You may also use multiple conditions, so one filter could have **SEX = MALE AND BIRTH YEAR > 2005**. Thus the only animals to be displayed would be bulls born after 2005.

Animals are not 'added' to a filter like you would a worksheet, it just displays every animal that meets the criteria from the available list. This means if you add a new animal that meets the conditions of the filter, the new animal will appear with the others when the filter is used.

USING THEM TOGETHER

Worksheets and filters can save you a lot of time when used together.

So when you select a worksheet it limits the animal list or animal selection screen to **ONLY** displaying the animals on the worksheet, you could then use a filter to further reduce the list to animals that only meet a certain set of conditions.

So by using them together you only display animals that meet the filter conditions **AND** are on the worksheet.

E.g. you could have a worksheet of animals you ran through the crush last week. You could then create a filter to find dams over a certain age. By using both the worksheet and the filter in **Data Entry | Matings** you could quickly reduce the selection screen of dams down to **ONLY** the dams over a certain age that were put through the crush last week.





USAGE EXAMPLES

EXAMPLE 1. USING FILTERS TO CREATE A WORKSHEET

Challenge: If I have a paddock of Dams and I wanted to mate some of the dams over a certain age. (please note, if I wanted to mate ALL dams over a certain age, we could just use a filter)

I could create a filter to find only animals where LOCATION = "paddock name" AND SEX = "female".

On the Animal list, pick the filter you just created and select the dams you wish to mate and hit the worksheet button, give the worksheet a name you can easily recognise.

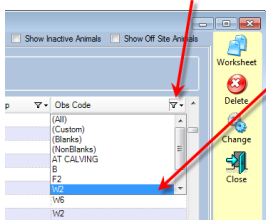
Now you can just use that worksheet in other areas of HerdMASTER.

EXAMPLE 2. USE FILTERS AND WORKSHEETS TOGETHER TO GET A LIST OF ANIMALS TO WEIGH

Challenge: You have animals that were previously recorded together for weaning weights on a particular date and you wish to do a CASTRATION procedure just on the bulls from that group.

Often most users will have a filter just called BULLS that uses a simple SEX = MALE condition in the filter. If you don't have one already you can create one.

Now we create our worksheet: go to the **View/Edit | Weights**, now using the column filters, I can select just for weaning weights OBS code and the date I did the weighing on, this reduces the list to just the animals I want.



I will call this **Weaners Weighed 2014 05 10**

(I have reversed the date order in the name so if I have many with the same name they order in the drop-down list by date properly)

Now I select all those animals and hit the Worksheet button on the right hand panel and type in a new worksheet name:

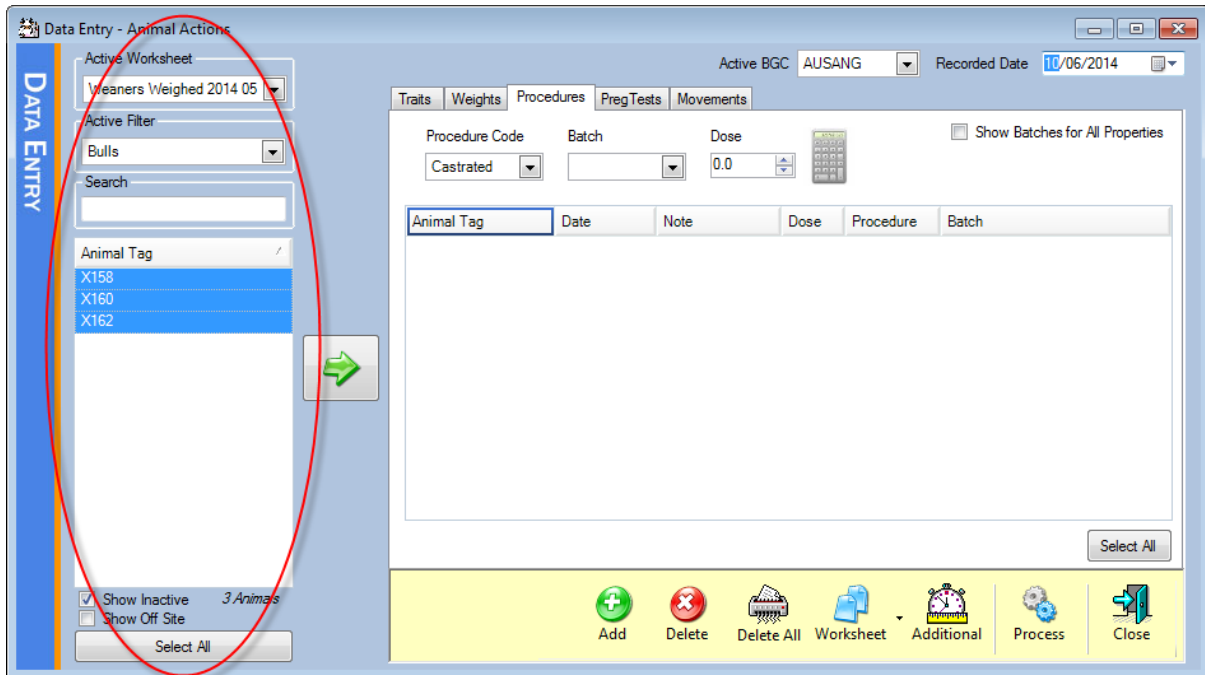
Animal Tag	Weigh Date	Weight	Note	Perf Group	Obs Code
X158	10/05/2014	200.00		1	W2
X162	10/05/2014	220.00		1	W2
X164	10/05/2014	230.00		1	W2
X161	10/05/2014	198.00		1	W2
X159	10/05/2014	210.00		1	W2
X160	10/05/2014	265.00		1	W2
X163	10/05/2014	250.00		1	W2
X165	10/05/2014	235.00		1	W2

8 Weights

Select All Deselect All



Now I close this window and go to **Data Entry | Procedures** and use the new worksheet and the filter called **BULLS**. This now will **ONLY** display the male animals in the worksheet as possible selections.



Now all that remains is to enter the castration info, select all and hit process.

Then we can use this same combination of worksheet and filter in our animal list to bulk change these animals to STEER sex.