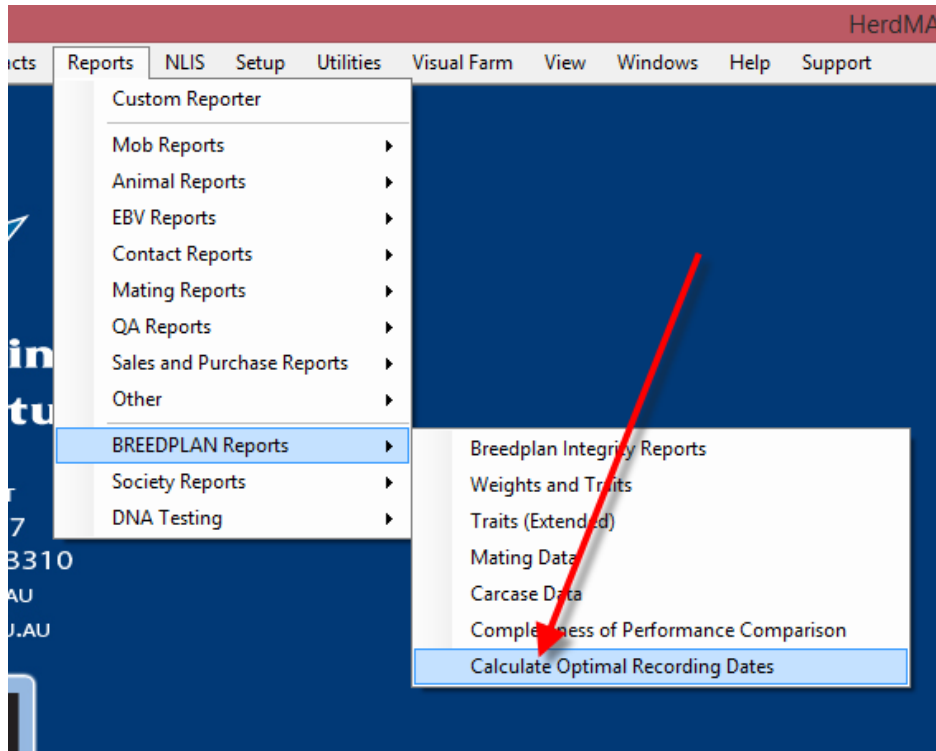


HerdMASTER 4 Tip Sheet

OPTIMAL BREEDPLAN RECORDING DATES

To find out the optimal breedplan recording dates for a group of cattle Please select **Reports | Breedplan Reports | Calculate Optimal Recording Dates**



When you have selected the Calculate Optimal Recording Dates option you will be presented with a screen where you can select the Start and end dates for calves born.

Optimal BREEDPLAN Recording Dates

Enter a start and end date for the calving season you wish to report on:

Start 14/08/2013

End 14/08/2014

Refresh

Optional

Specify an Animal Range

Remove top/bottom 5% for optimum date calculation

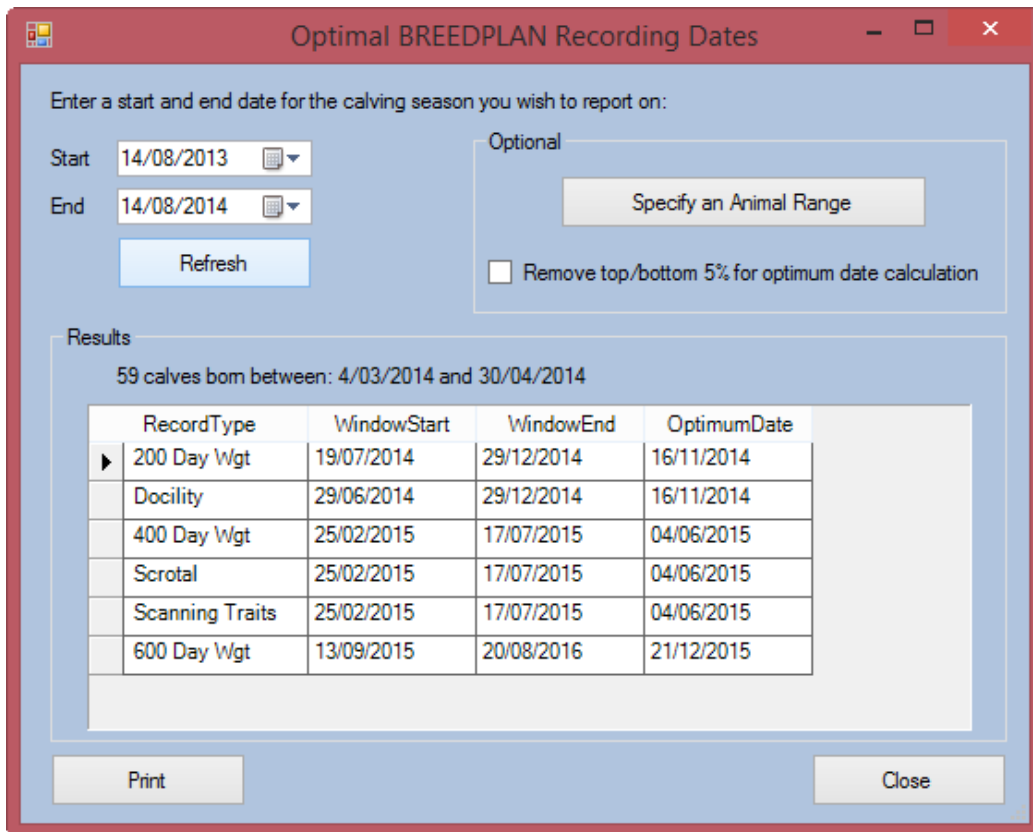
Results

Print Close

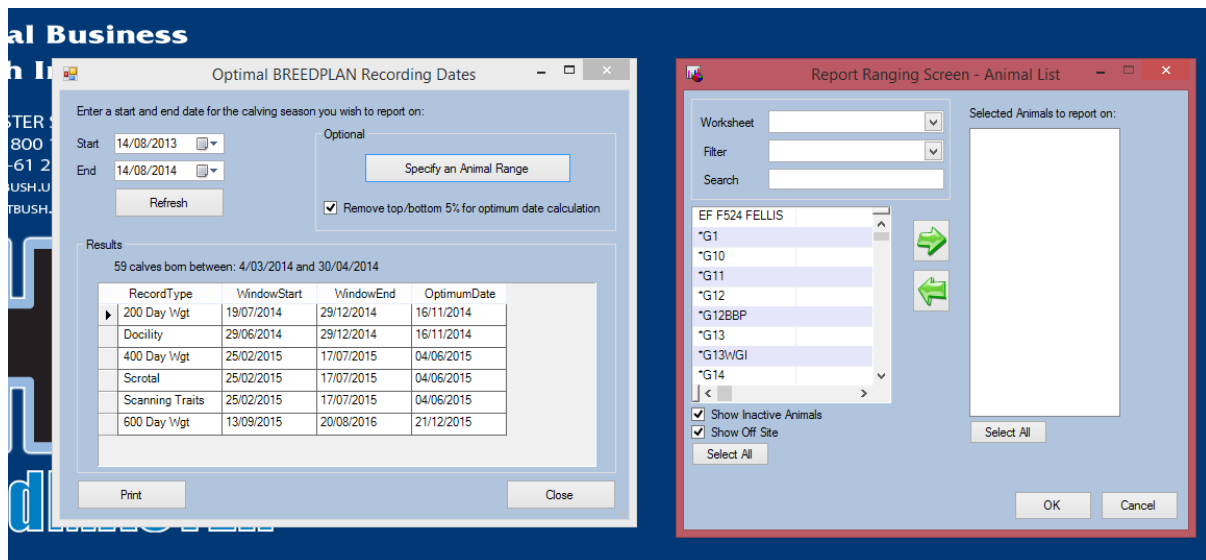
When you have entered the dates you want to work with press the refresh option.

Window Start and Window End represent the first and last date on which you must measure where all selected animals will be within the BREEDPLAN cut-off's for each Trait Record type.

The optimal date is the estimated best date based on the median where the animals are at their best age for that Trait Record type.



If you want to work with a specific Group of animals in addition to the dates you can click on the specify animal range button and select the group you want to work with.



When you have selected the group you want to work with either by the date ranges or by selecting the animals themselves you can print the information by pressing the print button. You will then get a report displayed similar to below.



Optimal BREEDPLAN Recording Dates

DOB Range Start: 14/08/2013 DOB Range End:14/08/2014

First Calf DOB: 4/03/2014 Last Calf DOB: 30/04/2014

Number of Calves in DOB range: 59

Trait Record	Window Begins	Window Ends	Optimal Date
200 Day Wgt (& Mature Cow Wgt)	19/07/2014	29/12/2014	16/11/2014
Docility	16/09/2016	6/11/2024	10/12/2019
400 Day Wgt	29/06/2014	29/12/2014	16/11/2014
Scrotal	25/02/2015	17/07/2015	4/06/2015
Scanning Traits	25/02/2015	17/07/2015	4/06/2015
600 Day Wgt	25/02/2015	17/07/2015	4/06/2015

This report attempts to identify a single window to perform measurements on the calves born in the selection.

Window Begins and Ends represent the first and last date on which you must measure where all selected animals will be within the BREEDPLAN cut-off's for each Trait Record type.

The optimal date is the estimated best date based on the median where the animals are at their best age for that Trait Record type.

Contact BREEDPLAN for further information on age cut-off's for taking measurements on calves for these traits.

If you have any questions on any of the information above please contact Saltbush Support. If you have any questions on the cut off dates please contact BREEDPLAN.

Or Visit the links below:

<http://breedplan.une.edu.au/booklets/A%20Guide%20to%20Recording%20Performance%20%28Complete%29.pdf>

http://breedplan.une.edu.au/index.php?option=com_content&task=view&id=14&Itemid=35