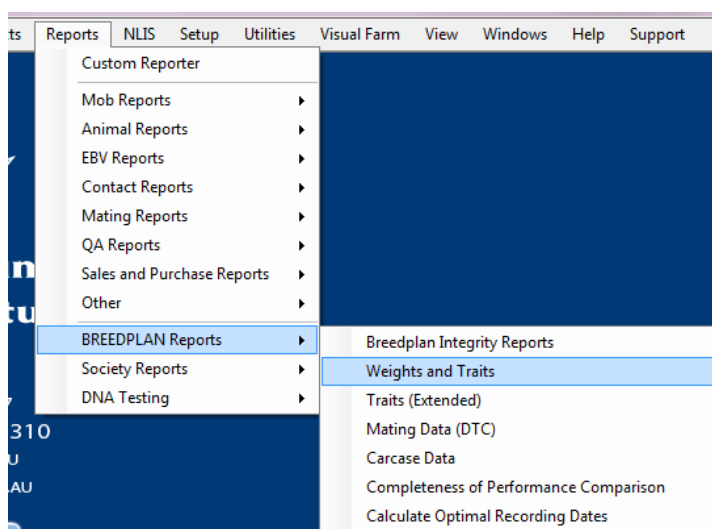


HerdMASTER 4 Tip Sheet

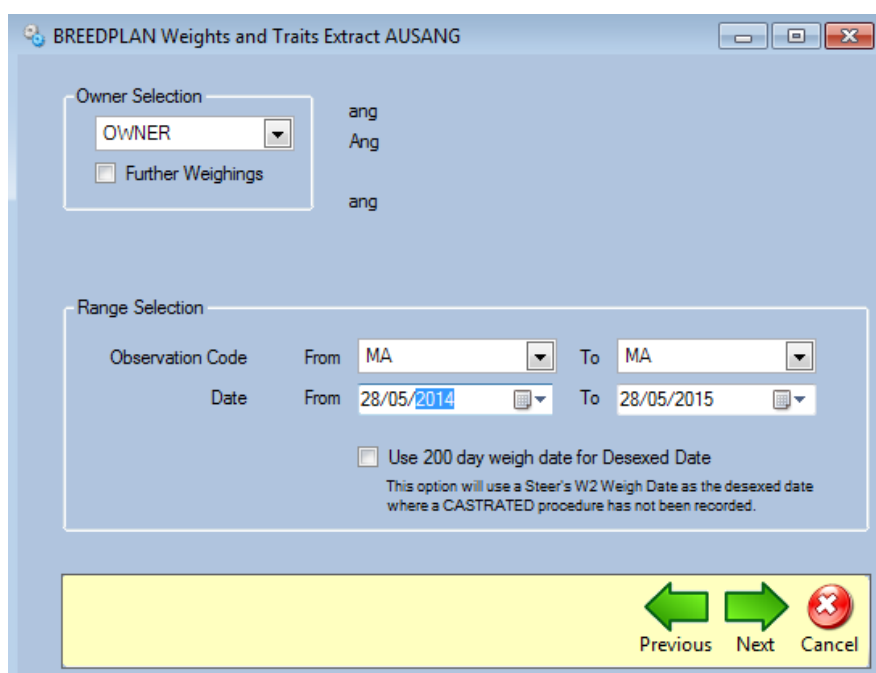
SUBMITTING MATURE COW WEIGHTS TO BREEDPLAN

Once you have recorded mature cow weights (cow weights within two weeks of their calves 200 day weight) in HerdMASTER; you can submit mature cow weight performance to BREEDPLAN.

SUBMITTING WEIGHTS



1. Click on **Reports | BREEDPLAN Reports | Weights and Traits**.
2. Select MA for the observation code (If you use a different observation code for mature weights use that) hit next when ready.

A screenshot of the 'BREEDPLAN Weights and Traits Extract AUSANG' dialog box. The 'Owner Selection' section has a dropdown menu set to 'OWNER' and a checkbox for 'Further Weighings' which is unchecked. The 'Range Selection' section has 'Observation Code' set to 'MA' for both 'From' and 'To' fields, and 'Date' set to '28/05/2014' for 'From' and '28/05/2015' for 'To'. There is a checkbox for 'Use 200 day weigh date for Desexed Date' which is unchecked, with a note below it: 'This option will use a Steer's W2 Weigh Date as the desexed date where a CASTRATED procedure has not been recorded.' At the bottom, there are three buttons: 'Previous' (green left arrow), 'Next' (green right arrow), and 'Cancel' (red circle with X).

- On the next page select the Analysis indicator **M** for Cow Wt at Weaning of Calf.
If you wish to submit additional data, in association with your mature cow weight performance (e.g. hip height): click the box next to the trait for which you wish to submit performance. The trait code that you used when entering the data should also be selected in the drop down box. Click the drop down menu to change the trait code.

BREEDPLAN Weights and Traits Extract AUSANG

Option Selection

Hip Height HH

Scrotal Circumference SS

Serving Capacity SC

Fat Depth at P8 P8F

Fat at 12/13 Rib 12F

Eye Muscle Area EMA

Scan Average IMF% MBL

Number of IMF Scans NIS

Muscle Score LM

Mature weights must be extracted in a separate file

Scanners Accreditation Number

Analysis Indicator (Extract Type)

AnalysisIndicator	Description
	Standard Weight
E	Feedlot Entry Weight
S	Pre-Slaughter Weight
M	Cow Wt at Weaning of Calf
C	Cow Wt at Calving
J	Cow Weight at Joining

Previous Next Cancel

- Use the next screen to include any other trait information you wish.

BREEDPLAN Weights and Traits Extract AUSANG

Extract Trait Data Selection

Include Animals with a Fate only?

Trait # 1

Trait # 2

Trait # 3

Trait # 4

Trait # 5

Trait # 6

Trait # 7

Trait # 8

Trait # 9

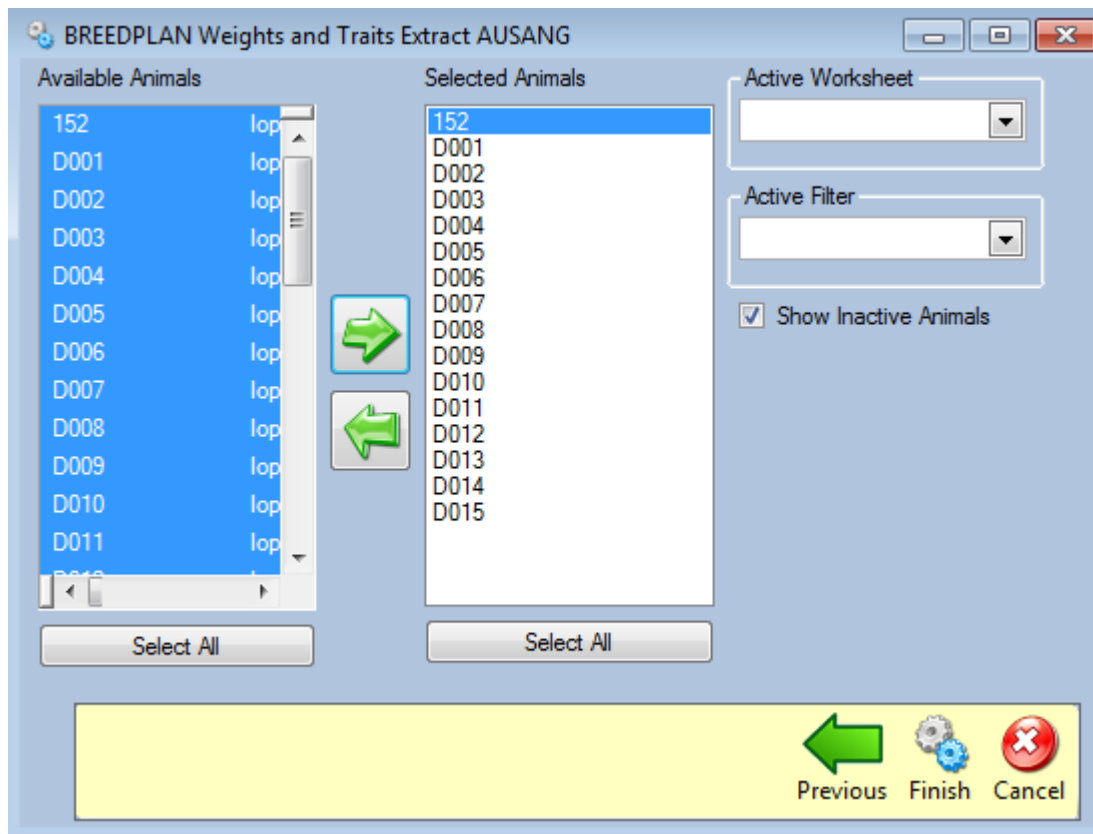
Trait # 10

Trait # 11

Trait # 12

Previous Next Cancel

5. Select the animals you wish to report on



6. Hit the **Finish** button, if there are any errors or problems then a summary will be generated telling you what has caused the issue, otherwise simply hit the buttons at the bottom to choose how you wish to submit the information

(Save to DAT file for you to email manually; Use your Email program to Email; use HerdMASTER to Email BREEDPLAN.)

