



# HerdMASTER 4 Tip Sheet

## RESTORING FROM A CENTRAL DATABASE

When you add a new computer system to an existing Central Sync Database the best way to get data onto that machine is to restore from the central database.

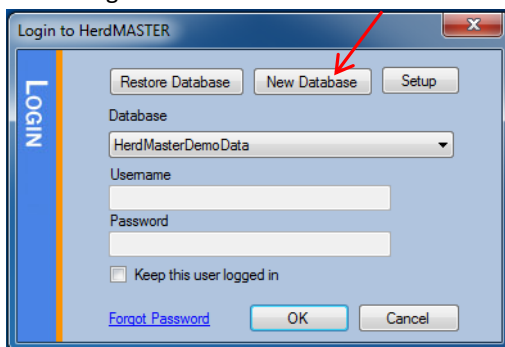
There are two methods

- 1) From the Login Screen if you need to create a New Database
- 2) From the File menu in an existing database.

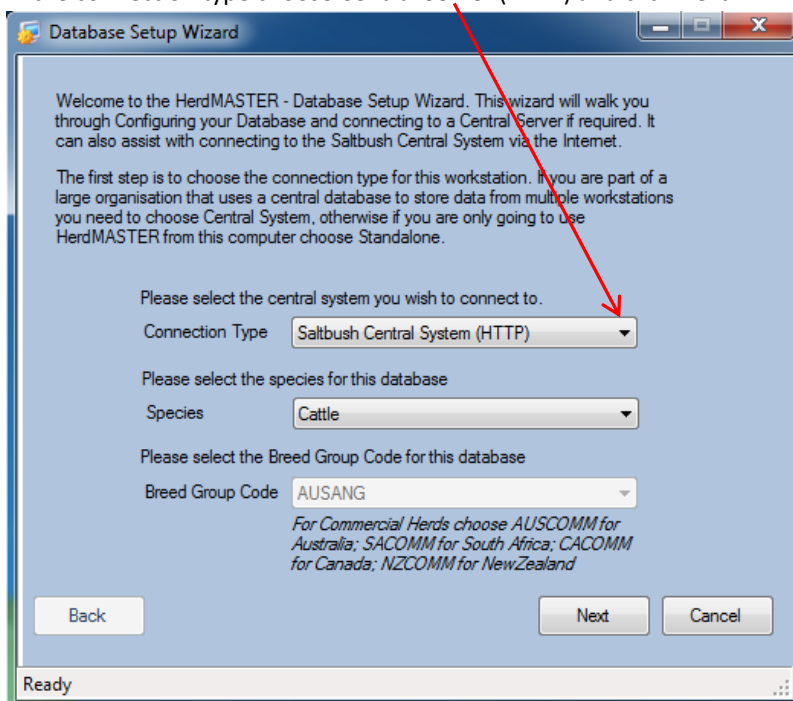
### FROM THE LOGIN SCREEN

If you are creating a new database in HerdMASTER this is the method to use to restore a backup from your central server.

1. On the login screen click New Database



2. In the connection type choose Central Server (HTTP) and click Next.





3. Enter the URL and other details provided by HerdMASTER Team to connect to your server and click Next.

The screenshot shows the 'Database Setup Wizard' window. The title bar reads 'Database Setup Wizard'. The main area contains the following text: 'Enter your Central Server Usernames and Passwords, then click ' Next' if you do not have this information contact your System Administrator or Saltbush to obtain it.' Below this are several input fields: 'Central Database Server URL:' with the value 'http://herdmaster.cloudapp.net/Sample/HMS4CentralSync.aspx'; 'Central Server Database Name' with 'SAMPLE'; 'Central Server Name' with 'SAMPLE\SERVER'; 'Central Server User Code' with 'username'; and 'Central Server Password' with a masked password '\*\*\*\*\*'. A note below the password field states: 'NOTE: Username and Password are Case Sensitive'. At the bottom are 'Back', 'Next', and 'Cancel' buttons. The status bar at the bottom left shows 'Ready'.

4. Choose the database to restore over – or choose to create a new database and give it a name then click Next.

The screenshot shows the 'Database Setup Wizard' window. The title bar reads 'Database Setup Wizard'. The main area contains the following text: 'Restore Selected Database As:'. Below this is a list box with 'As New Database' selected. Underneath the list box is a text field labeled 'NewDatabaseName'. A note below the text field states: 'The New Database Name must not contain special characters or spaces and must not be the same name as a database in the list above.' At the bottom are 'Back', 'Next', and 'Cancel' buttons. The status bar at the bottom left shows 'Ready'.

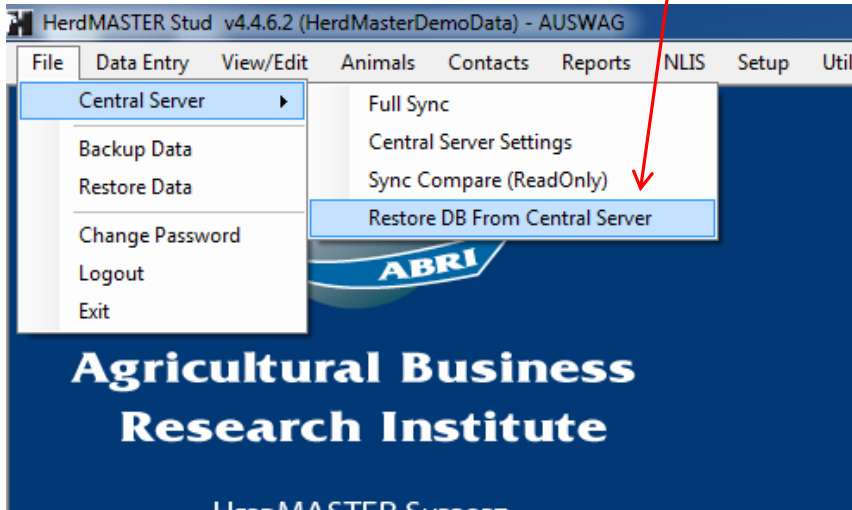
5. Click Finish – HerdMASTER will now to to contact the server using the details you provided and download and restore your central database. If you have connection problems or issues creating the database please contact support for assistance.



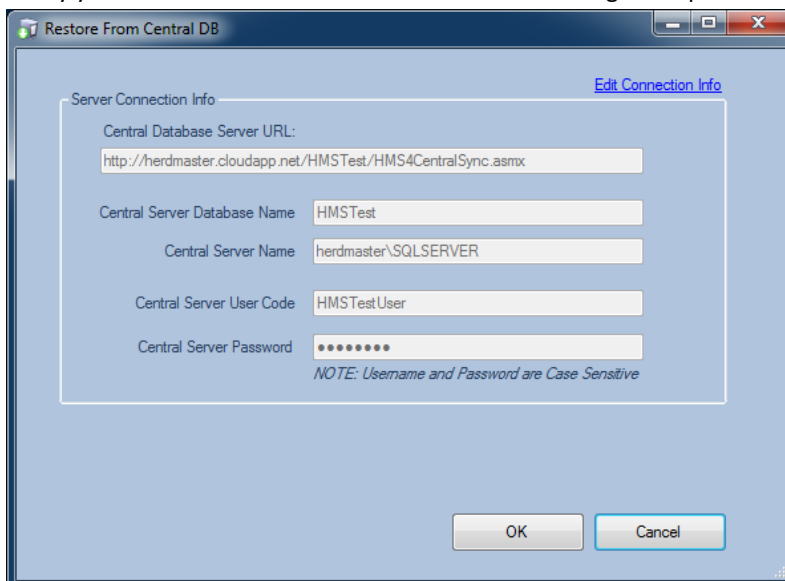
## FROM THE FILE MENU – EXISTING DATABASE

Log into the database you wish to replace with a backup from the server. From the File menu you can choose to restore a central database.

1. Click (File | Central Server | Restore DB from Centra Server)

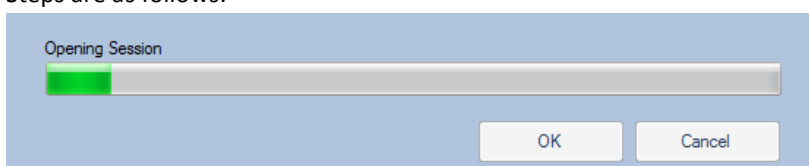


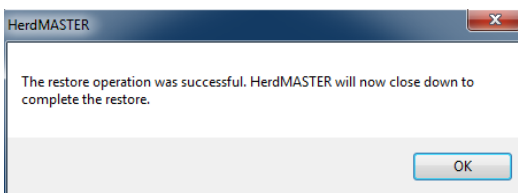
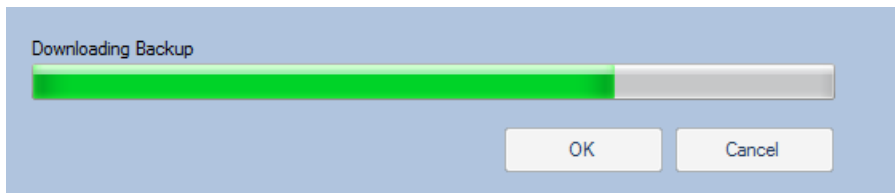
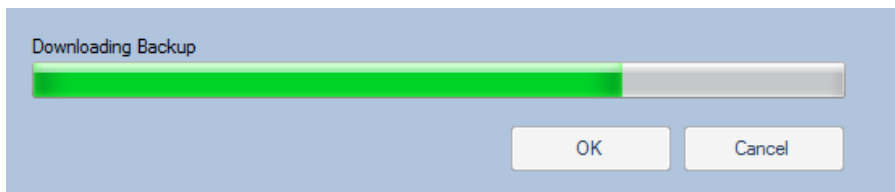
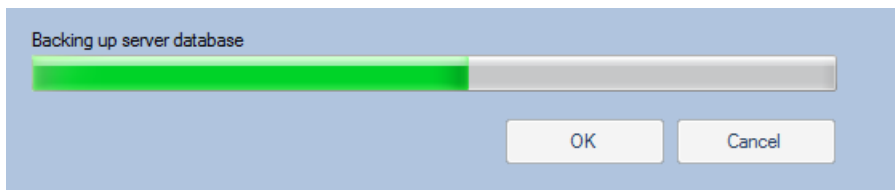
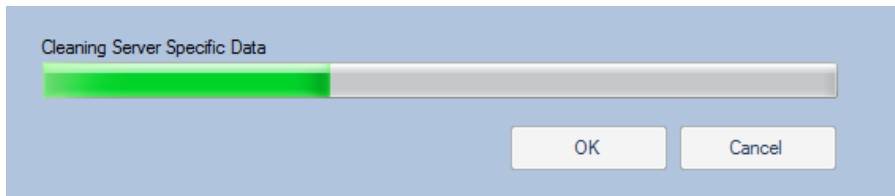
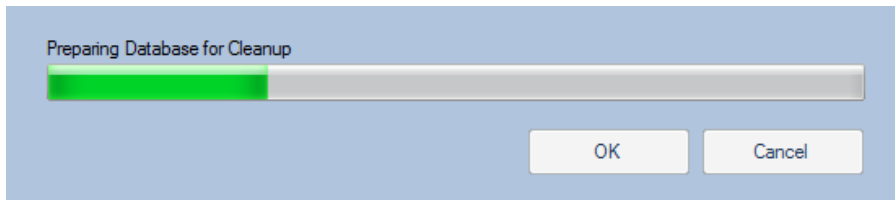
2. Verify your connection info is correct and click OK to begin the process.



Note if your connection info is not correct contact support for assistance.

3. HerdMASTER will automatically connect, prepare, download and restore your central database. Depending on the size of your database and the speed of your internet this process can take quite some time (Up to 20 min) please do not close HerdMASTER while this operation is in progress.
4. Steps are as follows:





5. Finally HerdMASTER will close down to complete the restore. You can now start HerdMASTER again and login to the backup restored from the central server.