



HerdMASTER 4 Tip Sheet

TRU-TEST EW7 GUIDE

The Tru-Test EziWeigh 7 device will communicate via Bluetooth or serial cable with HerdMASTER through the Crush Side Recording Utility (CSRU).

It has to be set up in such a way so you have to send the command to get a weight from the CSRU as it will not send it automatically. The supplied USB cable cannot be used as it does not allow 'live' weights to stream using it.

This document is designed to be followed in order.

CONTENTS

Setup the EW7 Device	1
Using Bluetooth	1
Using Serial cable	1
Setup Windows for using the EW7 via Bluetooth.....	2
Setup HerdMASTER	3
First time you Start the Bluetooth Scales in CSRU	4
Troubleshooting	5
I didn't see what com-port the EW7 was on	5
Everything seems to work but I get no weight	5
"Cannot open the port" when I hit the start button in CSRU	5

SETUP THE EW7 DEVICE

USING BLUETOOTH

Setup the device as you would normally according to the manual. Serial output can be set to off or on.

USING SERIAL CABLE

Talk to Tru-Test about how to connect to computer via serial cable as you may need to use optional cables not supplied normally.

Once your cable is connected to the computer windows will specify which com port the usb to serial cable is operating on. Just use that com port as you would normally in HerdMASTER (For more information see the CSRU manual [here](#)).

Serial output on the EW7 should be set to output weight.





SETUP WINDOWS FOR USING THE EW7 VIA BLUETOOTH

Click on the Bluetooth icon in the lower right hand corner of your screen. It should look like this:



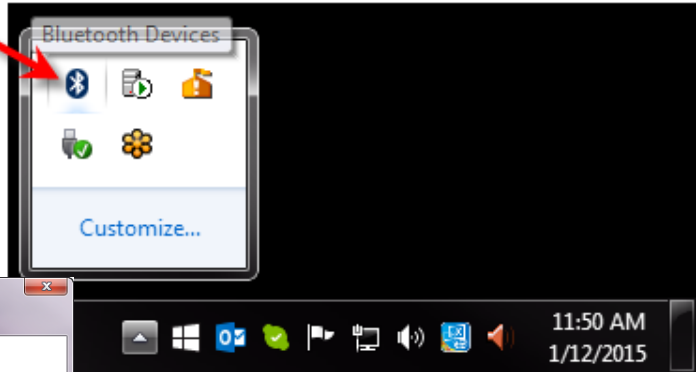
It will be with the other icons in the bottom right hand corner of your menu-bar in windows.

Although it may be hidden under the more button

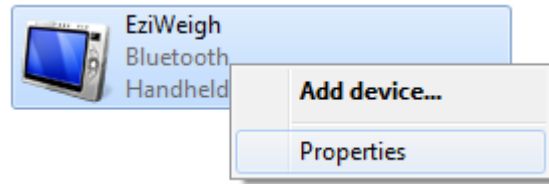
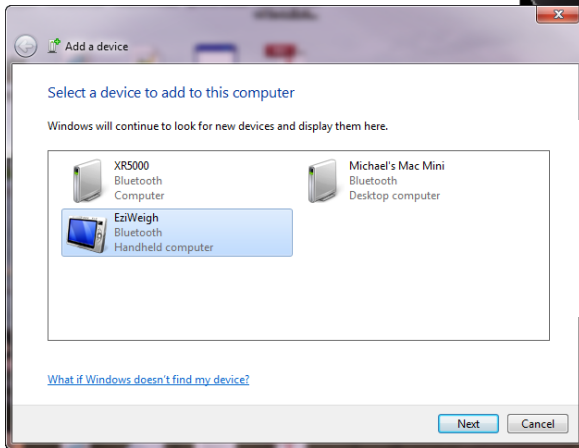


Click your Bluetooth connection button (it may be hidden in more button as in the image).

When clicking it you should have a menu pop up, hit **add devices**.



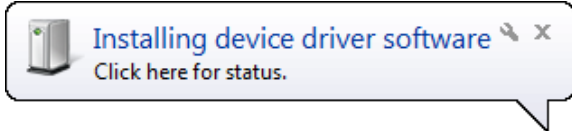
The window below will display, the EW7 identifies as the EziWeigh, you will need to right click it and select **properties**.



Now select the **Services** tab and check the option to use **Serial Port** under **Bluetooth Services** and hit **OK**.

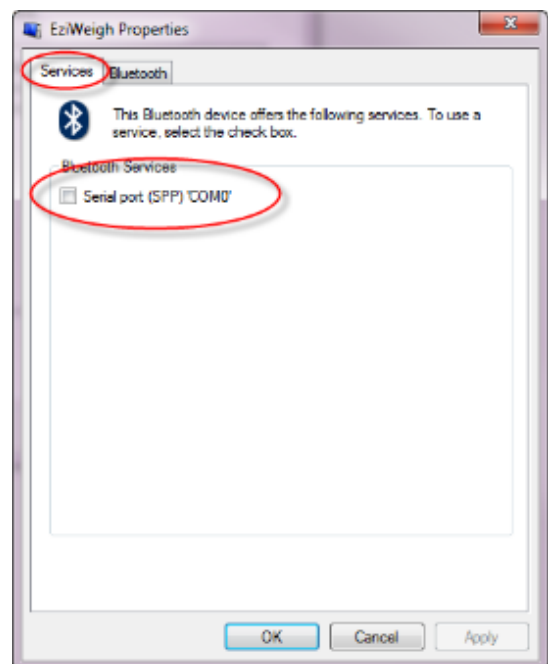
Windows will now search online for the latest drivers for your device, once it connects it should tell you the com port it is using.

If you are not connected to the internet then install the Tru-Test software, and it will install the drivers that were current when you bought your model.



Now the add device window will be missing the EziWeigh device as we have just installed it using a different method, so just hit cancel.

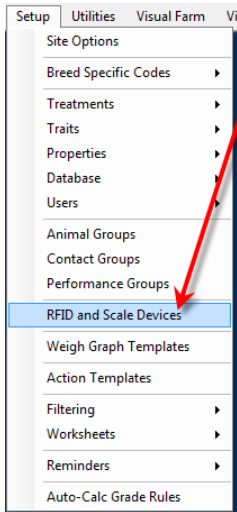
The first time you try to connect to the EW7 in HerdMASTER it will ask for a pin or passcode, just type in default.





SETUP HERDMASTER

Within HerdMASTER select **Setup | RFID and Scale Devices**.



You will be presented with the screen below which displays all the devices and their settings.

Device Name	Device Desc	Baud BPS	Data Bits	Parity	Stop Bits	Flow Control	Send Char	Test Char
none								
Alies Stick Reade	Alies stick reader	9600	8	None	1	0		
Allflex Stick Read	Allflex grey and y	9600	8	None	1	0		
Ruddweigh Scale	Ruddweigh 600+	9600	8	None	1	0		
TruTest Scales	TruTest XR/SR S	9600	8	None	1	0		

Now we could just edit the Tru-test scales entry or add a new device, either way the settings should be on default we just have to change the send character (**Send Char**).

If we want the Crush Side Recording Utility to get a stable weight, we would use the command (O is the letter not the number): **{RO}**

!! IMPORTANT NOTE !!

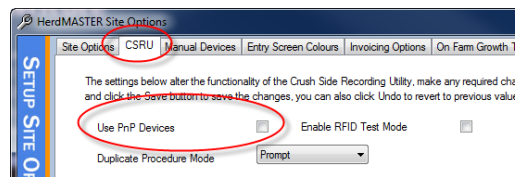
These commands have to be typed in exactly, including the curly brackets.

These are commands that are sent when the **Get Weight** button in the CSRU is pressed, the command itself tells the EW7 what we want it to do and what information we want it to send us.

So once it is setup, the line should look something like below:

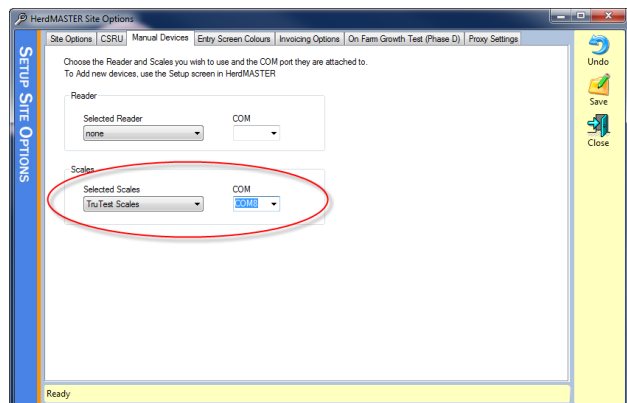
Device Name	Device Desc	Baud BPS	Data Bits	Parity	Stop Bits	Flow Control	Send Char	Test Char
none								
Alies Stick Reade	Alies stick reader	9600	8	None	1	0		
Allflex Stick Read	Allflex grey and y	9600	8	None	1	0		
Ruddweigh Scale	Ruddweigh 600+	9600	8	None	1	0		
TruTest Scales	TruTest XR/SR S	9600	8	None	1	0	{RP1}	

Now we close that window and select **Setup | Site Options**



On the **CSRU** tab we make sure **Use PnP Devices** is unchecked, if you wish to know more about the other options on this page, please read the CSRU manual available [here](#).

Now on the **Manual Devices** tab select the scale you setup previously, in my case I just used the TruTest Scales, and select the Com Port that was identified when you setup the device earlier.

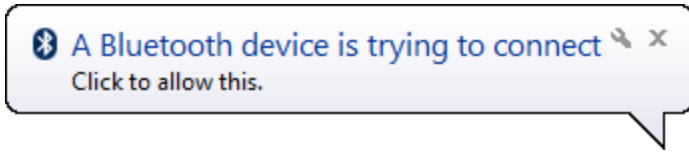


If you do not know the com port number then refer to the troubleshooting section at the end for instructions on finding out what it is.



FIRST TIME YOU START THE BLUETOOTH SCALES IN CSRU

You should receive a message in the bottom right hand corner of windows the first time you try to connect to the device.

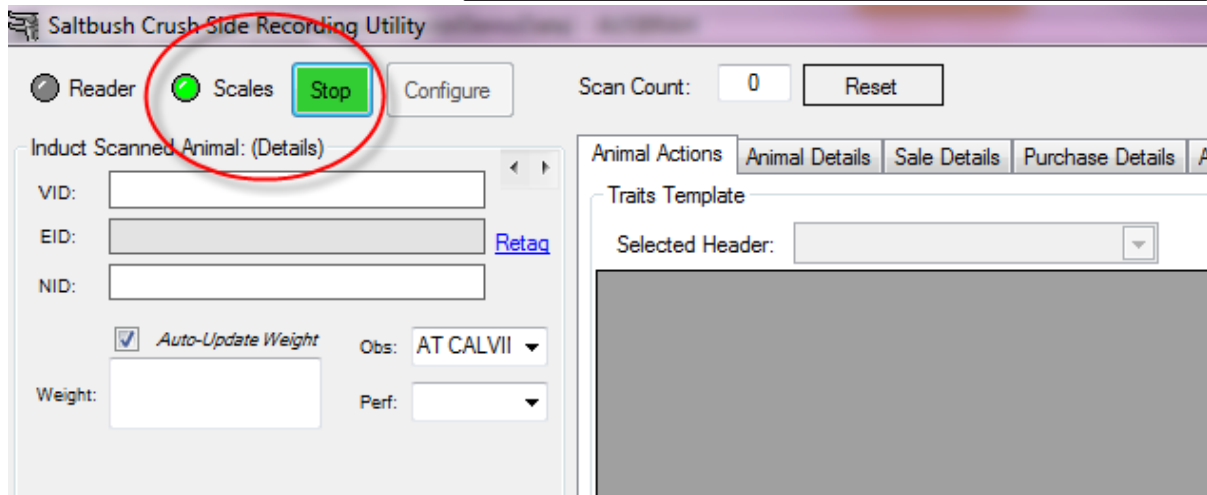
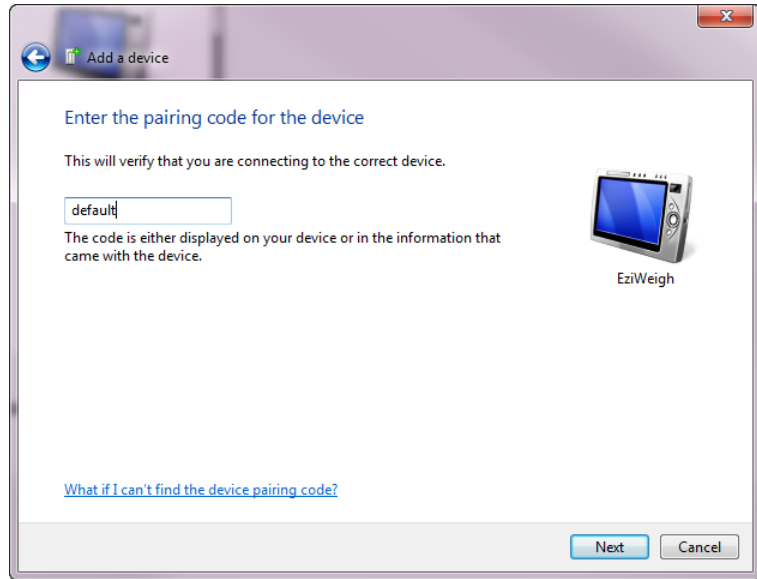


Click on this icon and you will be taken to a window asking for a pairing code. Once entered you should have to do this again.

The standard passcode for the EW7 is **default**. If that does not work then try **0000**, otherwise contact your supplier or Tru-Test support.

Once paired the device will beep and there will be a little arrow next to the bluetooth icon on the screen.

On the Crush Side Recording Utility you will see the scale circle in the top left and the stop button go green.



Now if you hit the **Get Weight** button



a weight should be brought from the scales into the weight field of the Crush Side Recorder.

!! IMPORTANT NOTE !!

When you stop the EW7, **MAKE SURE** you hit the **STOP** button in the CSRU **FIRST**, only turn off the EW7 when it beeps to tell you it has disconnected and the little arrow is longer present next to the Bluetooth icon.

If you do not you will have problems reconnecting as the port was not closed correctly (this is a common problem with Bluetooth and communications with windows) and you may have to reboot your computer.



TROUBLESHOOTING

I DIDN'T SEE WHAT COM-PORT THE EW7 WAS ON

Go to your Bluetooth connections in the bottom right hand corner of windows and select **Show Bluetooth Devices**. Double-click on the EziWeigh and then select the hardware or services tab.

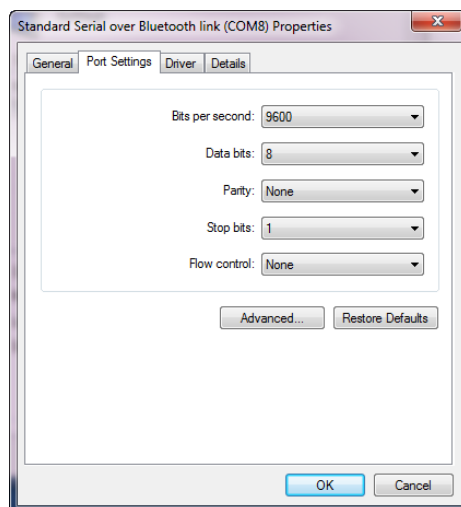
Either tab will show you which com port it is operating on.

EVERYTHING SEEMS TO WORK BUT I GET NO WEIGHT

In HerdMASTER, double check the **Setup | RFID and Scale Devices** and make sure the device you selected has **{RO}** in the **Send Char** column, make sure the O is **not** a zero numeral.

If you have checked that this is correct, that the com port is correct, and that you have selected the right device to use with CSRU then try the following:

1. Go to your Bluetooth connections in the bottom right hand corner of windows and select **Show Bluetooth Devices**.
2. Double-click on the EziWeigh and then select the **Hardware** tab.
3. Select the serial over Bluetooth option from the list and hit the **Properties** button at the bottom of the window.
4. In the new window select the **Port Settings** tab and make sure they are the same as what was set in the **Setup | RFID and Scale Devices** window within HerdMASTER for that device.



The reason this may be important is because particular batches or models of the EW7 may be using different settings.

"CANNOT OPEN THE PORT" WHEN I HIT THE START BUTTON IN CSRU

It means that either the port was not closed before the device switched off or that something else is using that port.

If you are using another piece of software that communicates wirelessly with the EW7, try closing it and attempt the CSRU again. If that does not work, restart the computer, turn the EW7 off then on and try again.