

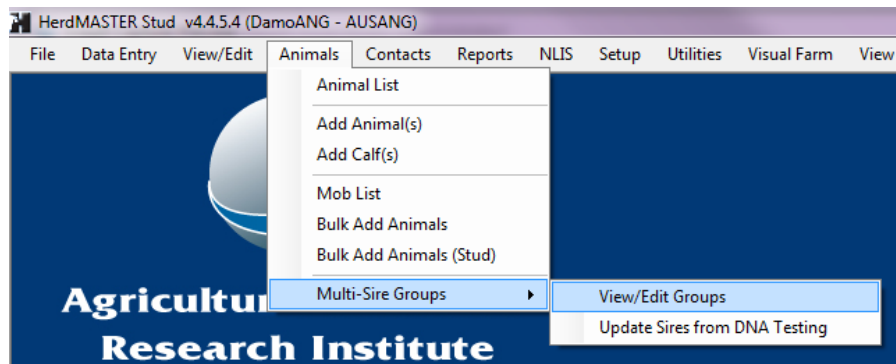
HerdMASTER 4 Tip Sheet

RECORDING MULTI-SIRES IN HERDMASTER

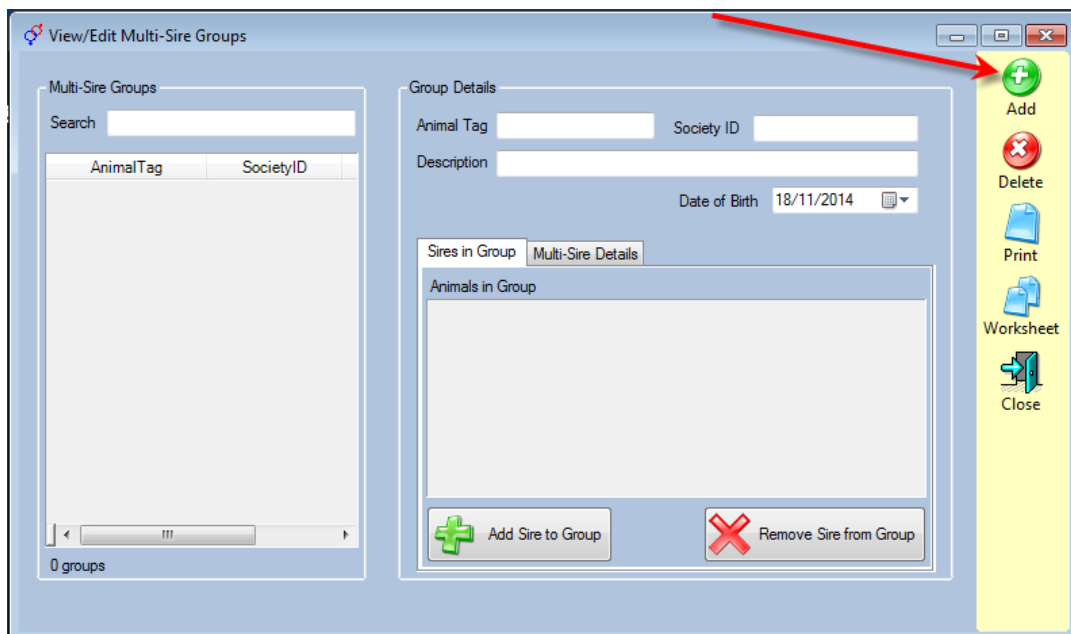
HerdMASTER has developed a new multi sire feature that will allow you to create a multi-sire and then assign sires to that multi-sire group.

CREATING MULTI-SIRE GROUPS

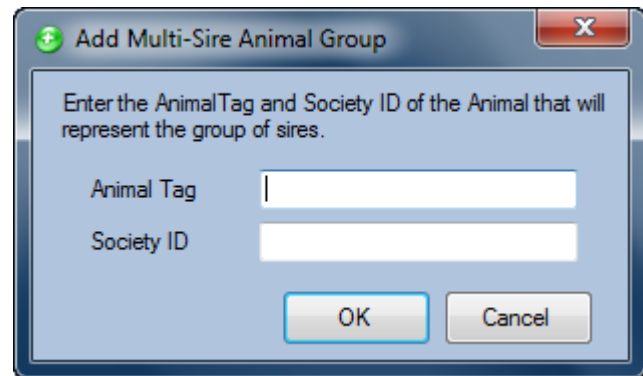
1. Click **Animal | Multi-Sire Groups | View/edit Groups**



2. You will then be presented with the following screen. The first thing you will need to do it click the add button to add the new multi-sire if none exist.



3. Enter the tag and society Id you want for the multi-sire group then press ok.
4. You will now see that sire in the left hand side of the screen under the multi-sire groups menu.



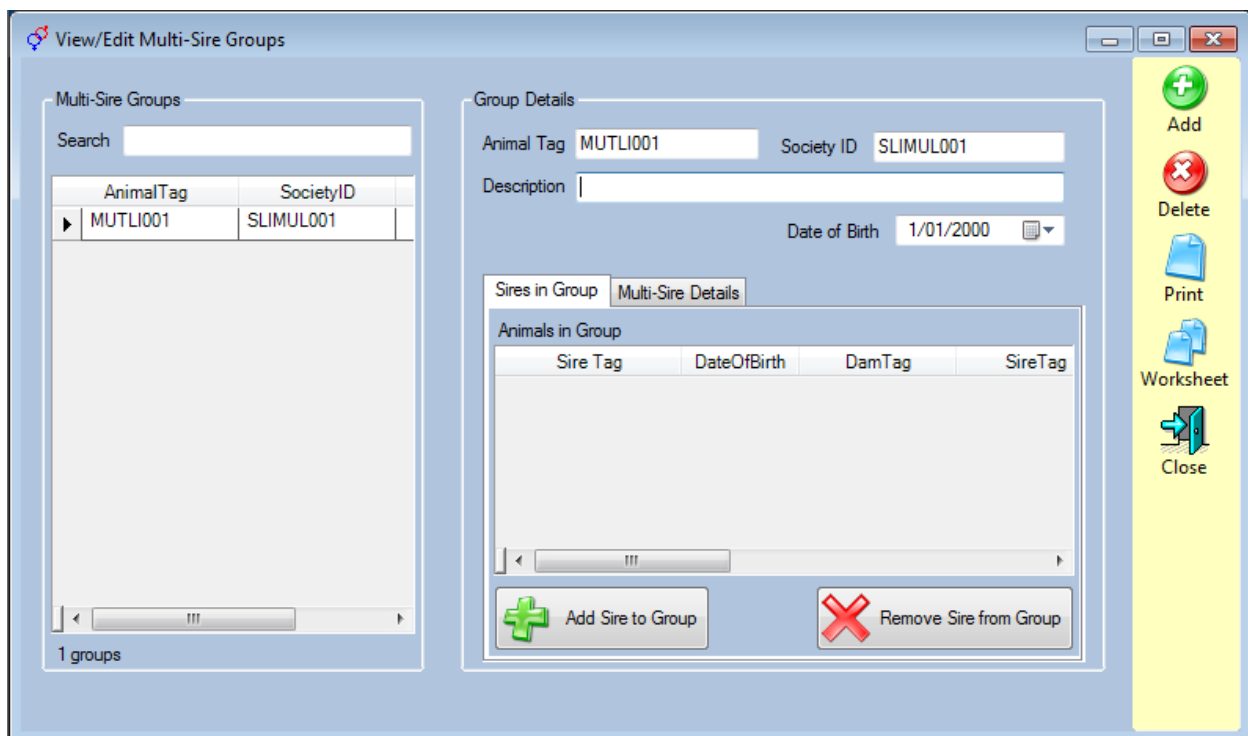
Add Multi-Sire Animal Group

Enter the AnimalTag and Society ID of the Animal that will represent the group of sires.

Animal Tag

Society ID

OK Cancel



View/Edit Multi-Sire Groups

Multi-Sire Groups

Search

AnimalTag	SocietyID
MUTLI001	SLIMUL001

1 groups

Group Details

Animal Tag Society ID

Description

Date of Birth

Sires in Group Multi-Sire Details

Animals in Group

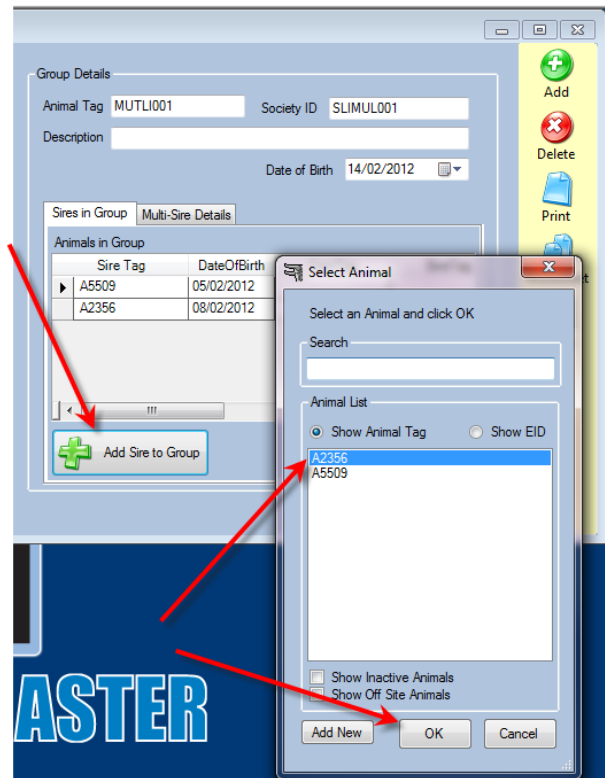
Sire Tag	DateOfBirth	DamTag	SireTag
----------	-------------	--------	---------

5. Ignore the date of birth dropdown, this is used just to get past validation checks in other areas of the program.

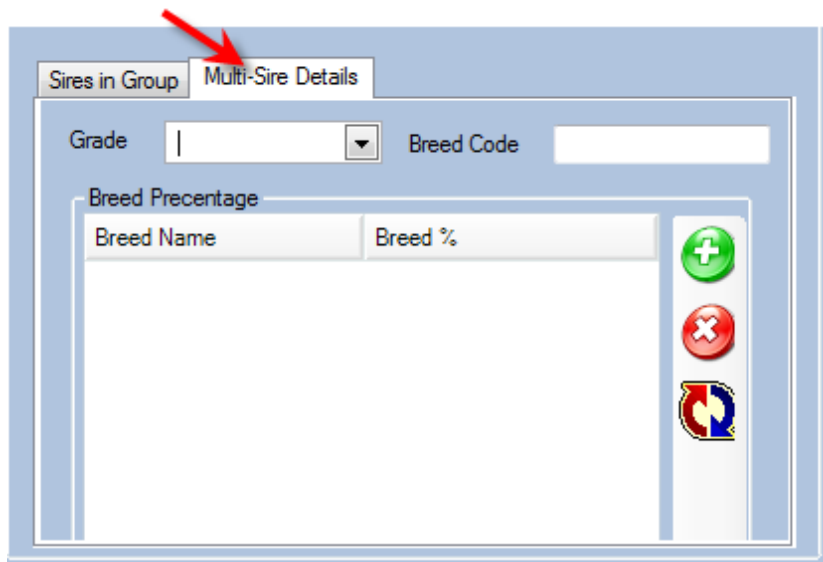
Add a description for the multi-sire if you wish

Now you need to add the sires that you want to be part of that Multi-sire group. To do this click on the Add sire to group option and choose the sire you want. Continue to do this until you have all the sires you need in that multi-sire group.

- When you have all the Sires that you want in that multi-sire group you can press the close button and you will be taken out of the Multi-Sire screen.



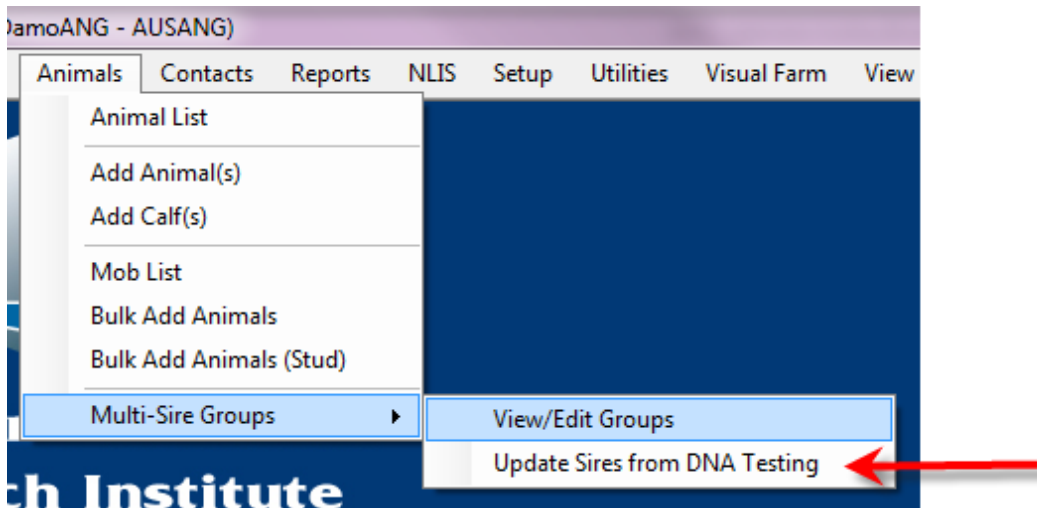
MUTLI SIRE DETAILS



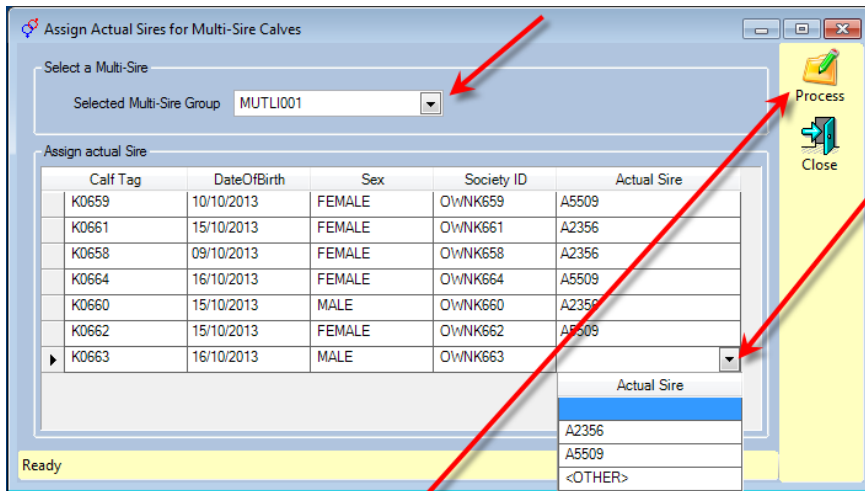
In the Multi-Sire Details tab you will find the details for grading breedcode and percentage that will be assigned to calves until the sire is known.

UPDATING SIRE FOR MULTI SIRE GROUPS WHEN YOU HAVE DNA RESULTS FOR CALVES

1. Select **Animals | Multi-Sire Groups | Update Sires form DNA Testing**



2. Select the multi sire group you have the results for from the drop down at the top.



3. Select the DNA sire from the drop down menu for each calf. The Assign Actual Sire list shown will remain empty until you have assigned matings to a multi-sire tag. (see the Animal Matings tip sheet for instruction on how to do that)

4. When you have finished updating the DNA sire press the process button to leave the screen and record the information.