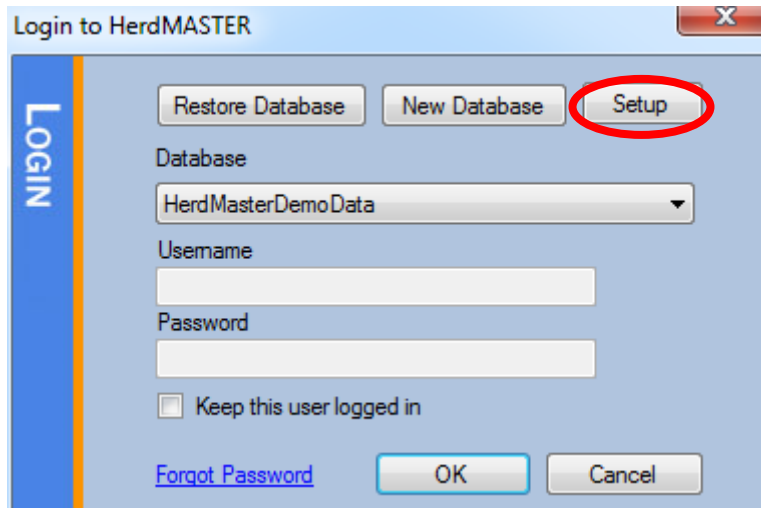


HerdMASTER 4 Tip Sheet

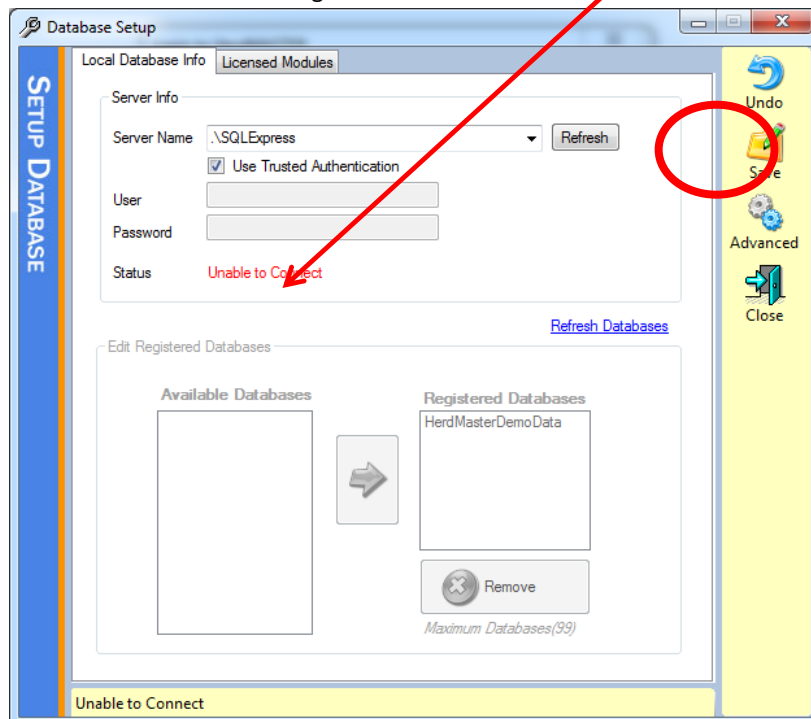
USING THE SQL SERVER CONNECTION REPAIR TOOL

Sometimes when you attempt to start HerdMASTER you will receive a message saying cannot connect to SQL server; SQL server is unavailable or SQL server is not the correct version. When you get these types of messages you can try to use the built-in repair tool to fix the connection to SQL server.

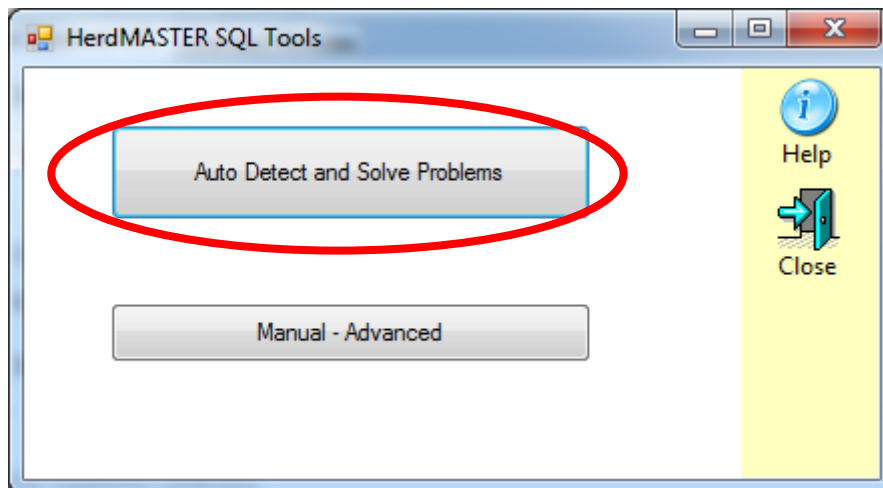
1. From the login screen click the Setup button:



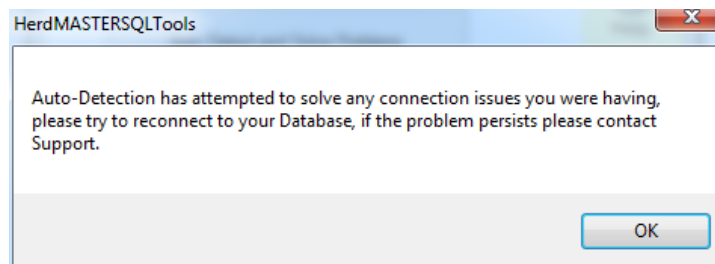
2. On the DB setup screen you will notice the DB status is **Unable to Connect**, click the Advanced button on the right hand side of the screen



3. When the Repair screen appears click the Auto Detect and Solve Problems button.



4. Click OK to the message and when you return to the previous screen you can check if the repair tool was able to connect to the SQL Server.



The repair tool is not able to fix ALL issues and if the repair tool does not fix your issue you can try to reboot your computer and repeat the process. If you still cannot connect please contact support for assistance.